



Pro Audio
Germany

PCS - M SERIES

www.4-acoustic.com

The PCS-M Series expands our product range with four high-quality multifunction full-range speakers in premium quality. All four models are equipped with precisely tuned crossovers networks. To optimize the coverage pattern to use as floor monitor the horn is 90° rotatable. The sound calibration of this series has transparent and clearly differentiated mid/high frequencies which provide a harmonious sound even at very high sound pressure levels. The workmanship is made without any compromises. The selection of the wood, varnish and speaker components is focused exclusively on the construction of a unique perfect sound speaker. All speakers of the PCS-M series have a VSL flight frame mounting base for wall, ceiling and truss installation, as well as various attachment points for hanging. Transportation covers are available optional.

PCS - M SERIES



Contents

Contents.....	03
PCS-108M 8" + 1" (1,75" Voice Coil) Two Way Full Range Speaker	04
PCS-110M 10" + 1" (1,75" Voice Coil) Two Way Full Range Speaker.....	05
PCS-112M 12" + 1,4" (3" Voice Coil) Two Way Full Range Speaker	06
PCS-115M 15" + 1,4" (3" Voice Coil) Two Way Full Range Speaker	07

PCS-108M

www.4-acoustic.com



Specification

PCS-108M

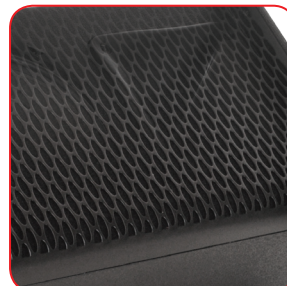
Model Name	PCS-108M
GS1 (EAN) CODE	4260318510172
System Type	2-Way 8"+1" Fullrange Speaker
Power Rating	250 W AES 500 W program 1000 W peak
Frequency Range (+/- 3 dB)	53 Hz - 20 kHz
Coverage Pattern (hvxv)	90°x40°
Sensitivity	97 dB 1w/1m
Maximum SPL	127 dB
Woofer	1 x STG-08M
Driver	1 x STG-44R (1,75" Voice Coil)
Nominal Impedance	8 Ohm
Input Connectors	2 x Neutrik NL4 Socket parallel 1+/1-
Suspension/Mounting	VESA 75 (Backside) 35 mm pole socket 8 x M8 suspension U-Profil-Base
Housing	Birch Multiplex
Coating	Anti-scratch Polyurethane coating
Dimensions (h/w/d)	450x260x239 mm
Net weight	13,0 Kg



Order Code	GS1 (EAN) Code	Type
PCS-108M-RC	4260318511513	Rain and transport cover for PCS-108M
STG-STD	4260318511032	Tripot Speaker Stand
KA-SP2-05	4260318510967	5 Meter Speaker cable 2x2,5qmm
KA-SP2-10	4260318510974	10 Meter Speaker cable 2x2,5qmm
KA-SP2-15	4260318510981	15 Meter Speaker cable 2x2,5qmm
KA-SP2-20	4260318510998	20 Meter Speaker cable 2x2,5qmm
SA-2080	4260318510820	2 Channel Class H Amplifier 2 x 800 Watt @ 8 ohm

Accessories

PCS-108M

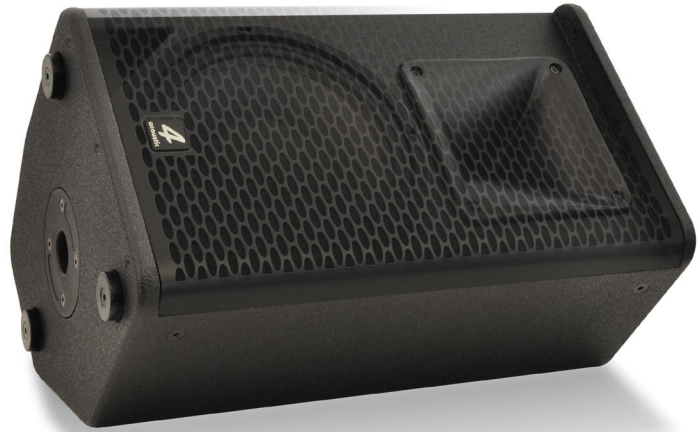




Pro Audio
Germany

PCS-110M

www.4-acoustic.com



Specification

PCS-110M

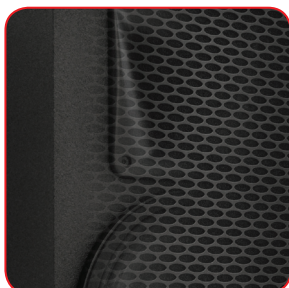
Model Name	PCS-110M
GS1 (EAN) CODE	4260318510189
System Type	2-Way 10"+1" Fullrange Speaker
Power Rating	300 W AES 600 W program 1200 W peak
Frequency Range (+/- 3 dB)	50 Hz - 20 kHz
Coverage Pattern (hvx)	90°x40°
Sensitivity	98 dB 1w/1m
Maximum SPL	128 dB
Woofer	1 x STG-10M
Driver	1 x STG-44R (1,75" Voice Coil)
Nominal Impedance	8 Ohm
Input Connectors	2 x Neutrik NL4 Socket parallel 1+/1-
Suspension/Mounting	VESA 75 (Backside) 35 mm pole socket 10 x M8 suspension U-Profil-Base
Housing	Birch Multiplex
Coating	Anti-scratch Polyurethane coating
Dimensions (h/w/d)	510x300x278 mm
Net weight	18,5 Kg



Accessories

PCS-110M

Order Code	GS1 (EAN) Code	Type
PCS-110M-RC	4260318511520	Rain and transport cover for PCS-110M
STG-STD	4260318511032	Tripot Speaker Stand
KA-SP2-05	4260318510967	5 Meter Speaker cable 2x2,5qmm
KA-SP2-10	4260318510974	10 Meter Speaker cable 2x2,5qmm
KA-SP2-15	4260318510981	15 Meter Speaker cable 2x2,5qmm
KA-SP2-20	4260318510998	20 Meter Speaker cable 2x2,5qmm
SA-2080	4260318510820	2 Channel Class H Amplifier 2 x 800 Watt @ 8 ohm



GERMAN
Pro
Audio
Engineering

PCS-112M

www.4-acoustic.com



Specification

PCS-112M

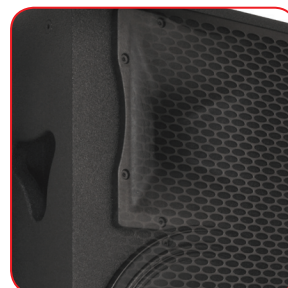
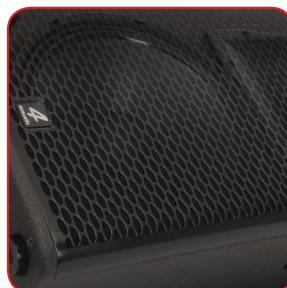
Model Name	PCS-112M
GS1 (EAN) CODE	4260318510196
System Type	2-Way 12"+1,4" Fullrange Speaker
Power Rating	500 W AES 1000 W program 2000 W peak
Frequency Range (+/- 3 dB)	43 Hz - 20 kHz
Coverage Pattern (hvx)	90°x40°
Sensitivity	101 dB 1w/1m
Maximum SPL	133 dB
Woofer	1 x STG-12M
Driver	1 x STG-75 (3" Voice Coil)
Nominal Impedance	8 Ohm
Input Connectors	2 x Neutrik NL4 Socket parallel 1+/1-
Suspension/Mounting	35 mm pole socket 20 x M8 suspension U-Profil-Base
Housing	Birch Multiplex
Coating	Anti-scratch Polyurethane coating
Dimensions (h/w/d)	610x350x324 mm
Net weight	23,0 Kg



Order Code	GS1 (EAN) Code	Type
PCS-112M-RC	4260318511537	Rain and transport cover for PCS-112M
STG-STD	4260318511032	Tripot Speaker Stand
KA-SP2-05	4260318510967	5 Meter Speaker cable 2x2,5qmm
KA-SP2-10	4260318510974	10 Meter Speaker cable 2x2,5qmm
KA-SP2-15	4260318510981	15 Meter Speaker cable 2x2,5qmm
KA-SP2-20	4260318510998	20 Meter Speaker cable 2x2,5qmm
SA-2100	4260318510837	2 Channel Class H Amplifier 2 x 1000 Watt @ 8 ohm

Accessories

PCS-112M





Pro Audio
Germany

PCS-115M

www.4-acoustic.com



Specification

PCS-115M

Model Name	PCS-115M
GS1 (EAN) CODE	4260318510202
System Type	2-Way 15"+1,4" Fullrange Speaker
Power Rating	600 W AES 1200 W program 2400 W peak
Frequency Range (+/- 3 dB)	39 Hz - 20 kHz
Coverage Pattern (hvx)	90°x40°
Sensitivity	103 dB 1w/1m
Maximum SPL	136 dB
Woofer	1 x STG-15M
Driver	1 x STG-75 (3" Voice Coil)
Nominal Impedance	8 Ohm
Input Connectors	2 x Neutrik NL4 Socket parallel 1+/1-
Suspension/Mounting	35 mm pole socket 20 x M8 suspension U-Profil-Base
Housing	Birch Multiplex
Coating	Anti-scratch Polyurethane coating
Dimensions (h/w/d)	690x410x364 mm
Net weight	28,5 Kg



Accessories

PCS-115M

Order Code	GS1 (EAN) Code	Type
PCS-115M-RC	4260318511544	Rain and transport cover for PCS-115M
STG-STD	4260318511032	Tripot Speaker Stand
KA-SP2-05	4260318510967	5 Meter Speaker cable 2x2,5qmm
KA-SP2-10	4260318510974	10 Meter Speaker cable 2x2,5qmm
KA-SP2-15	4260318510981	15 Meter Speaker cable 2x2,5qmm
KA-SP2-20	4260318510998	20 Meter Speaker cable 2x2,5qmm
SA-2130	4260318510844	2 Channel Class H Amplifier 2 x 1300 Watt @ 8 ohm



GERMAN
Pro
Audio
Engineering

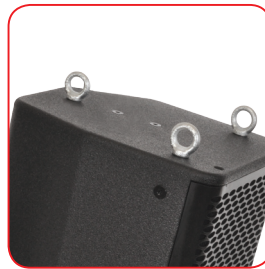


Pro Audio
Germany

PCS - M SERIES

www.4-acoustic.com

PCS - M SERIES



Pro Audio
Germany

INLINE Marketing GmbH

Bunsenstrasse 32

59229 Ahlen, Germany

Tel. +49 2382 7087-0

Fax +49 2382 7087-25

E-Mail sales@4-acoustic.com

Web www.4-acoustic.com